

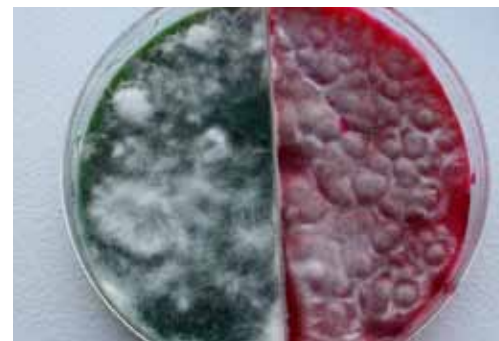
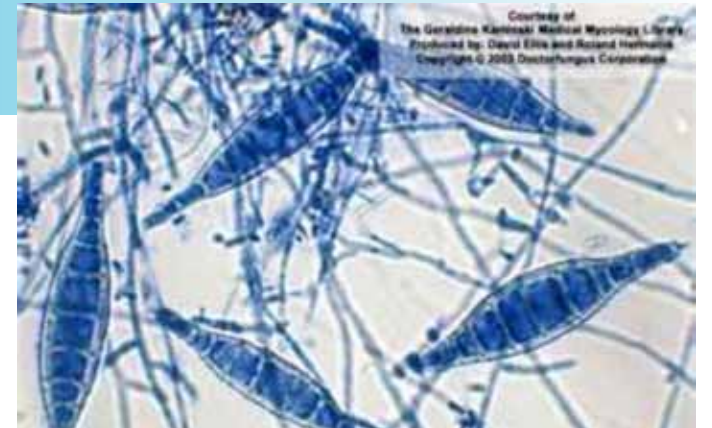


# RINGWORM

## IDENTIFICATION CHART

### Microsporum canis

- Spindle shaped, thick walled macroconidia can have up to 15 septa
- Macroconidia are located on or near hyphae
- Fuzzy “soft” expanding growth on the culture plate



### Microsporum gypseum

- Thin walled, more clubbed shaped macroconidia, only 4-6 septa
- Macroconidia are located away from hyphae
- Condensed, powdery growth on the culture plate



### Trichophyton mentagrophytes

- Cigar shaped, thin walled macroconidia
- Coiled hyphae, ‘grape’ clusters of microconidia
- Condensed, granular growth on the culture plate

